

# State of Wyoming Corner Record

(In compliance with the **CORNER PERPETUATION AND FILING ACT**, Wyoming Statutes, 1997 Section 33-29-140 et. seq., and the Rules and Regulations of the Board of Professional Engineers and Professional Land Surveyors)

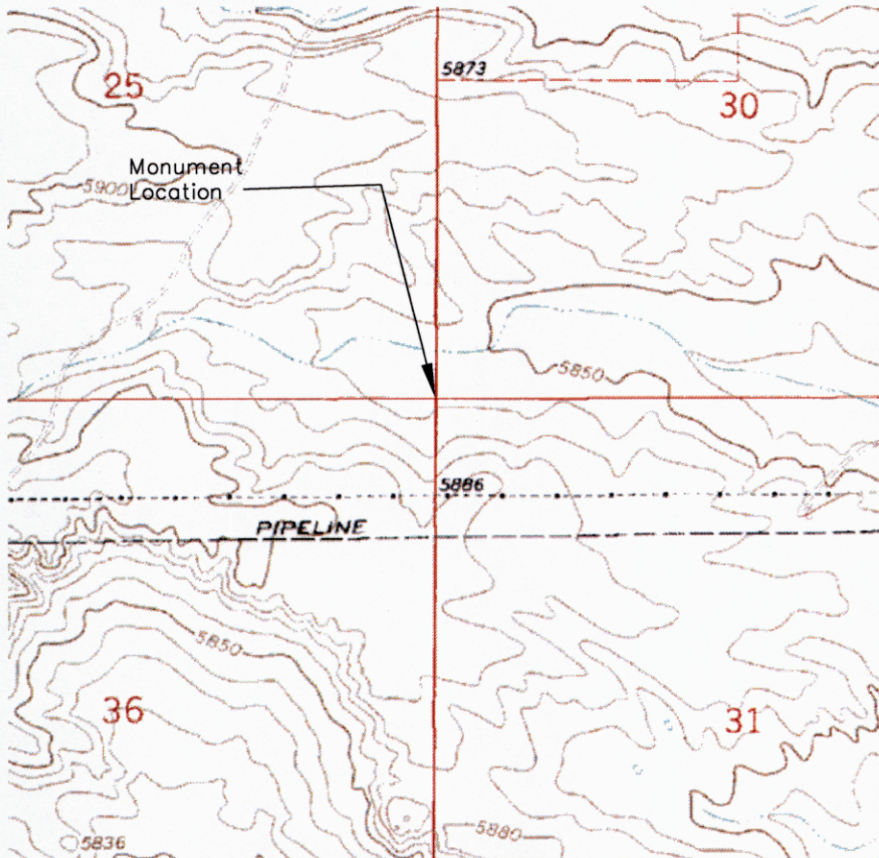
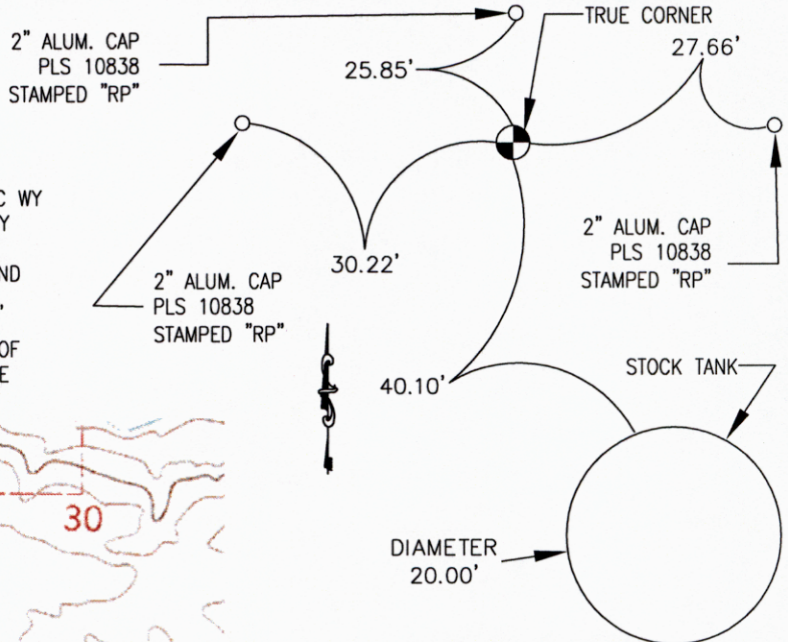
Reverse side of this form may be used if more space is needed.

Record of original survey and citation of source of historical information (if corner is lost or obliterated). Description of corner monumentation evidence found and/or monument and accessories established to perpetuate the location of this corner. Sketch of relative location of monument, accessories, and reference points with course and distance to adjacent corner(s) (if determined in this survey). Method and rationale for reestablishment of lost or obliterated corner.

**FOUND:** NOTHING

**TIES:** N00° 11' 22"E, 2631.28' TO E ¼ 25  
S89° 58' 38"E, 2567.00' TO S ¼ 30

**SET:** A 3/4" ALUM. CAP ON A 3/4" X 30" REBAR, STAMPED AVI PC WY PLS. NO. 10838, MARKED APPROPRIATELY. SET CORNER BY SINGLE PROPORTION ALONG TOWNSHIP LINE BETWEEN THE SOUTHEAST CORNER OF SECTION 36, T14N, R65W, A FOUND MONUMENT, AND THE SOUTHEAST CORNER OF SECTION 24, T14N, R65W, AS THE SAME WAS REESTABLISHED BY THIS SURVEYOR, USING RECORD INFORMATION FROM THE PLAT OF DURHAM ESTATES SUBDIVISION 2ND FILING. SET REFERENCE POINTS AS SHOWN.



**Monument location**



**Monument Inscription**

Date of Field Work: 6/29/07

Office Reference: 2807

## Cross Index Plat

	1	2	3	4	5	6	7	8	9	10	11	12	13	14	15	16	17	18	19	20	21	22	23	24	25
A	+	+	+	+	+	+	+	+	+	+	+	+	+	+	+	+	+	+	+	+	+	+	+	+	+
B	+	6	+	5	+	+	+	4	+	+	+	3	+	+	+	2	+	+	+	1	+	+	+	+	
C	+	+	+	+	+	+	+	+	+	+	+	+	+	+	+	+	+	+	+	+	+	+	+	+	
D	+	+	+	+	+	+	+	+	+	+	+	+	+	+	+	+	+	+	+	+	+	+	+	+	
E	+	+	+	+	+	+	+	+	+	+	+	+	+	+	+	+	+	+	+	+	+	+	+	+	
F	+	+	+	+	+	+	+	+	+	+	+	+	+	+	+	+	+	+	+	+	+	+	+	+	
G	+	7	+	8	+	+	+	9	+	+	+	10	+	+	+	11	+	+	+	12	+	+	+	+	
H	+	+	+	+	+	+	+	+	+	+	+	+	+	+	+	+	+	+	+	+	+	+	+	+	
J	+	+	+	+	+	+	+	+	+	+	+	+	+	+	+	+	+	+	+	+	+	+	+	+	
K	+	+	+	+	+	+	+	+	+	+	+	+	+	+	+	+	+	+	+	+	+	+	+	+	
L	+	18	+	17	+	+	+	16	+	+	+	15	+	+	+	14	+	+	+	13	+	+	+	+	
M	+	+	+	+	+	+	+	+	+	+	+	+	+	+	+	+	+	+	+	+	+	+	+	+	
N	+	+	+	+	+	+	+	+	+	+	+	+	+	+	+	+	+	+	+	+	+	+	+	+	
O	+	+	+	+	+	+	+	+	+	+	+	+	+	+	+	+	+	+	+	+	+	+	+	+	
P	+	19	+	20	+	+	+	21	+	+	+	22	+	+	+	23	+	+	+	24	+	+	+	+	
Q	+	+	+	+	+	+	+	+	+	+	+	+	+	+	+	+	+	+	+	+	+	+	+	+	
R	+	+	+	+	+	+	+	+	+	+	+	+	+	+	+	+	+	+	+	+	+	+	+	+	
S	+	+	+	+	+	+	+	+	+	+	+	+	+	+	+	+	+	+	+	+	+	+	+	+	
T	+	30	+	29	+	+	+	28	+	+	+	27	+	+	+	26	+	+	+	25	+	+	+	+	
U	+	+	+	+	+	+	+	+	+	+	+	+	+	+	+	+	+	+	+	+	+	+	+	+	
V	+	+	+	+	+	+	+	+	+	+	+	+	+	+	+	+	+	+	+	+	+	+	+	+	
W	+	+	+	+	+	+	+	+	+	+	+	+	+	+	+	+	+	+	+	+	+	+	+	+	
X	+	31	+	32	+	+	+	33	+	+	+	34	+	+	+	35	+	+	+	36	+	+	+	+	
Y	+	+	+	+	+	+	+	+	+	+	+	+	+	+	+	+	+	+	+	+	+	+	+	+	
Z	+	+	+	+	+	+	+	+	+	+	+	+	+	+	+	+	+	+	+	+	+	+	+	+	

Firm/Agency, Address

AVI P.C.  
2035 WESTLAND RD.  
CHEYENNE, WY. 82001

This corner record was prepared by me or under my direction and supervision.

SEAL & SIGNATURE

Telephone Number: 307-637-6017



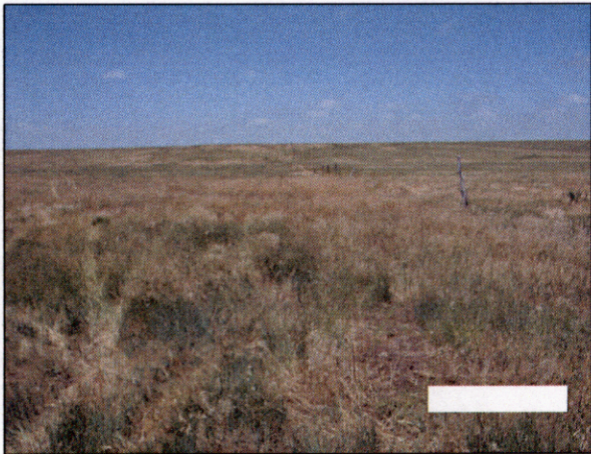
Corner Name Northeast Corner Section 36, T 14 N, R 65 W, 6th P.M.  
County: LARAMIE Wyoming

Cross-Index No.: V-25

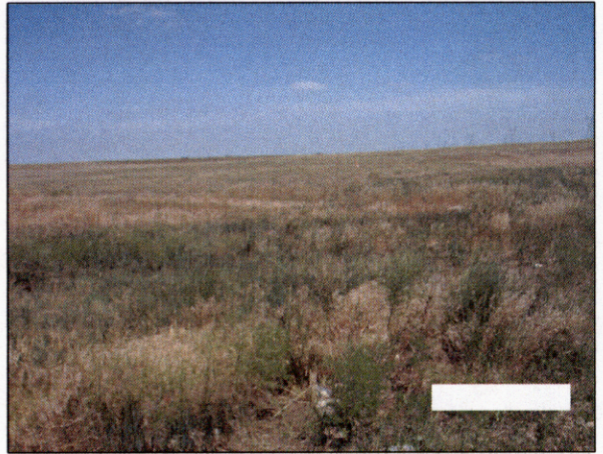
SBRPEPLS/PLSW: March 1994; PLSW January 1998

RECORDED 10/31/2007 AT 9:20 AM REC# 486881 X# 2031 PG# 1086 DEBRA K. LATHROP, CLERK OF LARAMIE COUNTY, WY PAGE 1 OF 2





View North

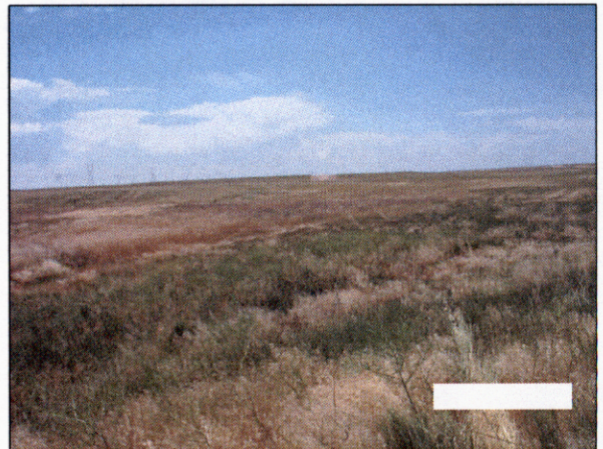


View East

  
 RECORDED 10/31/2007 AT 9:20 AM REC# 486881 K# 2031 PG# 1087  
 DEBRA K. LATHROP, CLERK OF LARAMIE COUNTY, WY PAGE 2 OF 2



View South



View West